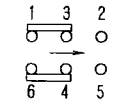


品番 No.	品名 PARTS NAME	材質 MATERIAL	表面处理 FINISH	数量 QTY
1	PUSH PLATE	ACETAL		1
2	COVER	ACETAL		1
3	CASE	PBT		1
4	TERMINAL	BRASS	Ag PLATING	6
5	CAM STICK	STAINLESS		1
6	CLIP	PHOSPHOR BRONZE+AgCLAD		2
7	SPRING	STAINLESS		1

[SPECIFICATIONS]

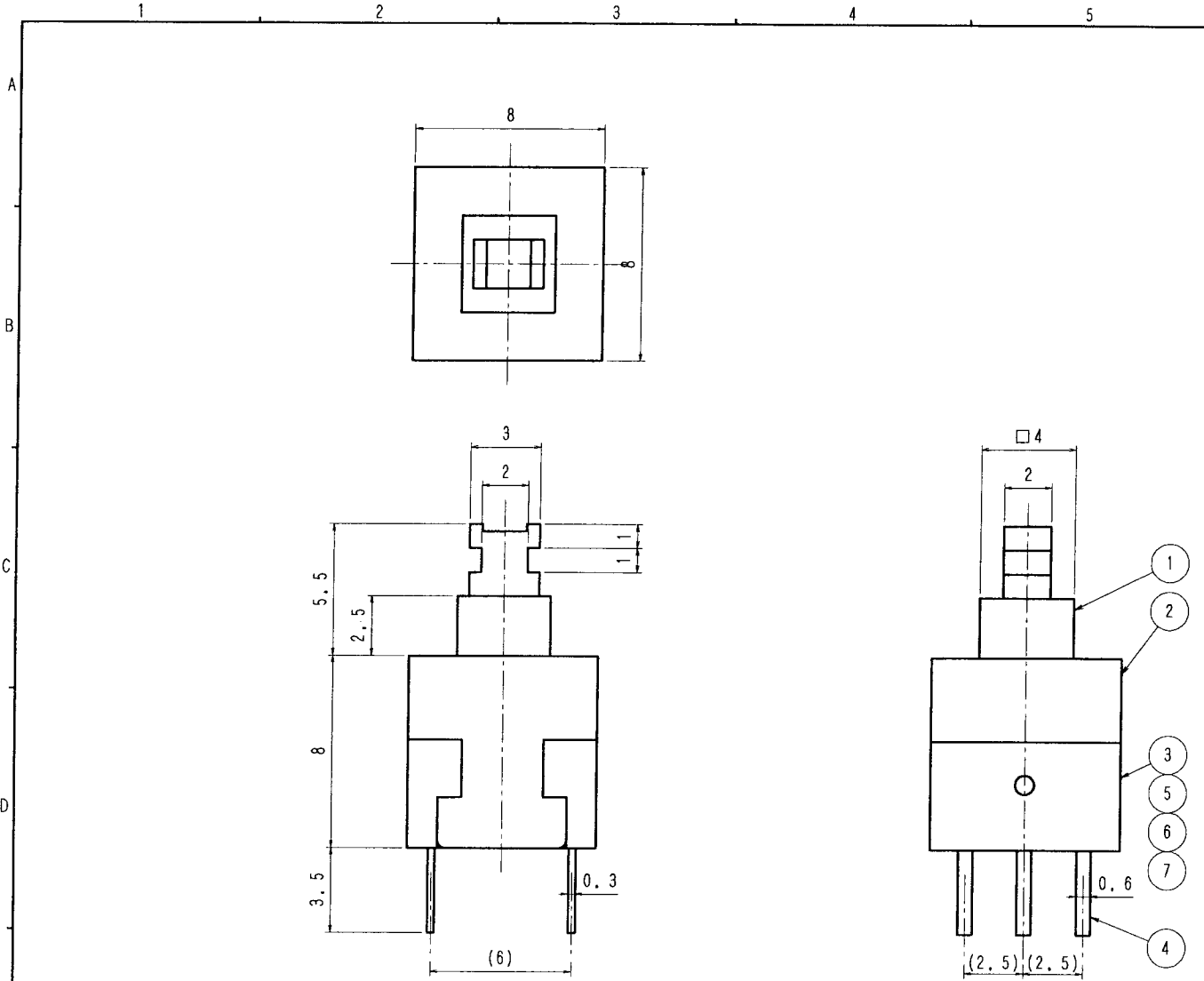
- RATING DC30V0.1A
- CIRCUIT DPDT NONSHORTING



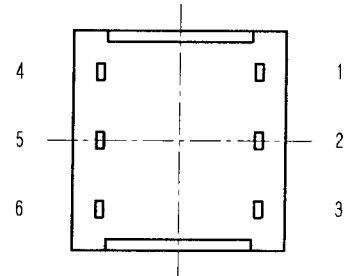
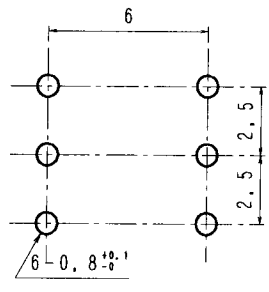
- ELECTRICAL STRUCTURE
 - CONTACT RESISTANCE 50mΩ MAX
 - INSULATION RESISTANCE DC500V FOR 100MΩ MAX
 - DIELECTRIC STRENGTH AC500V FOR 1MINUTE
 - ENDURANCE 10,000 CYCLES
- MECHANICAL STRUCTURE
 - OPERATING FORCE 1.76±0.5N (180±50)
 - STROKE FULL 2.5mm LOCK 1.5mm
- RE: HOW TO SOLDER

SOLDERING SHOULD BE DONE WITH AN IRON OF THE TEMPERATURE BETWEEN 30W AND 40W, WITHIN 3 SECONDS,

- LOADING
- REGARDING TO THE LAMP LOADING AND THE LOADING OF POWER FACTOR RATIO UNDER 60%, BOTH LOADING SHOULD BE CONFIRMED WITH THE REAL EFFECTIVE LOADING,



P. C. B DIMENSION



單位 m/m	第三角法 3RD ANGLE PROJECTION	尺度 5/1	普通寸法差 TOLERANCE UNLESS SPECIFIED ±0.3	品番	
DIMENSION	製圖 DRAWN	設計 DESIGNED	照合 CHECKED	承認 APPROVED	TITLE
年月日	年月日	年月日	年月日	年月日	PUSH SWITCH
SHINDEN CO., LTD.					DRAWING No.
					SDPJ-2285