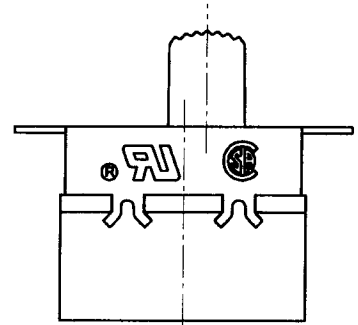
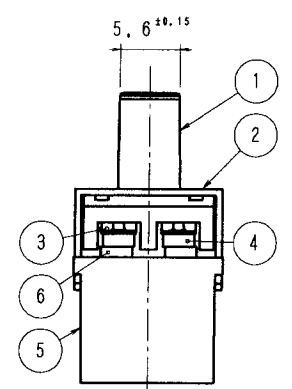
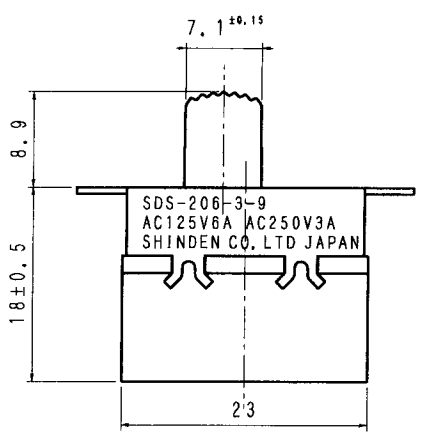
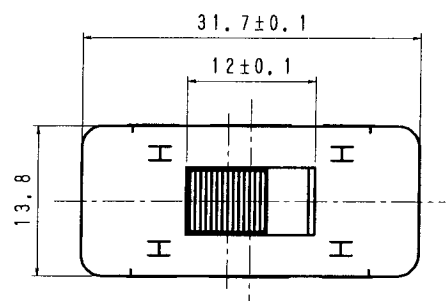


1 2 3 4 5 6 7 8

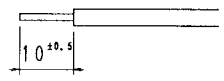
品番 No.	PARTS NAME	MATERIAL	FINISH	個数 Q'TY
1	NOB	POLYCARBONATE	BLACK	1
2	FRAME	CARBON STEEL	ELECTROLYTIC ZINC-COATED	1
3	SPRING	PHOSPHOR BRONZE		2
4	CONTACT PLATE	COPPER	Ag-PLATED	2
5	CASE	POLYAMIDE		1
6	ROCK TERMINAL	COPPER ALLOY	Ag-PLATED	6



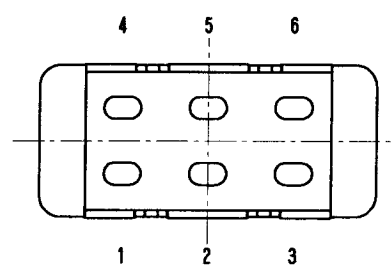
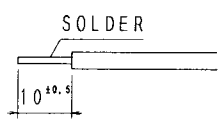
[SPECIFICATIONS]

- RATING AC125V6A, AC250V3A
- CIRCUIT
- ELECTRICAL STRUCTURE
 - 3-1 CONTACT RESISTANCE LESS THAN 20mΩ
 - 3-2 INSULATION RESISTANCE MORE THAN 100MΩ. ON DC500V.
 - 3-3 DIELECTRIC STRENGTH AC1000V. FOR 1MIN
 - 3-4 ENDURANCE 6000CY
- MECHANICAL STRUCTURE
 - 4-1 OPERATION 2~12.7N (200~1300g)
- APPROVED UL No. E66008
CSANo. LR46721
- RE: HOW TO SOLDER
SOLDERING SHOULD BE DONE WITH AN IRON OF THE TEMPERATURE BETWEEN 30W AND 40W, WITHIN 3 SECONDS,
- LOADING
REGARDING TO THE LAMP LOADING AND THE LOADING OF POWER FACTOR RATIO UNDER 60%, BOTH LOADING SHOULD BE CONFIRMED WITH THE REAL EFFECTIVE LOADING,

WIRING
AWG20 COPPER WIRE



STRANDED COPPER WIRE



DIMENSION	3RD ANGLE	SCALE	TOLERANCE UNLESS SPECIFIED	390397											
m/m	PROJECTION	2:1	±0.3	TITLE											
DRAWN	DESIGNED	CHECKED	APPROVED	SLIDE SWITCH											
DRAWING No.				SDS-206-3-9#2DC											
シンデン 株式会社 SHINDEN CO., LTD.															